

**Final Design for SOMA West Skatepark, artist Jovi Schnell
For presentation at March 19, 2014 Visual Arts Committee**

“There Slipped Saturn A Perpetual Tock - a.k.a. The Saturn Clock”

The imagery in the mural work proposed for the new SOMA West Skatepark draws part of its inspiration from the vision and scale of the area's former forgotten treasure, San Francisco's opulent Woodward's Gardens. The park, bordered by Mission and Valencia, spanned between 13th and 15th Streets. Its motto was “Education, Recreation and Amusement.” In its heyday of operation, from 1866-1891, Woodward's Gardens offered its visitors an amusement park, museum of natural curiosities, zoo, gallery, and exotic gardens, as well as the largest west coast skating rink of its time.

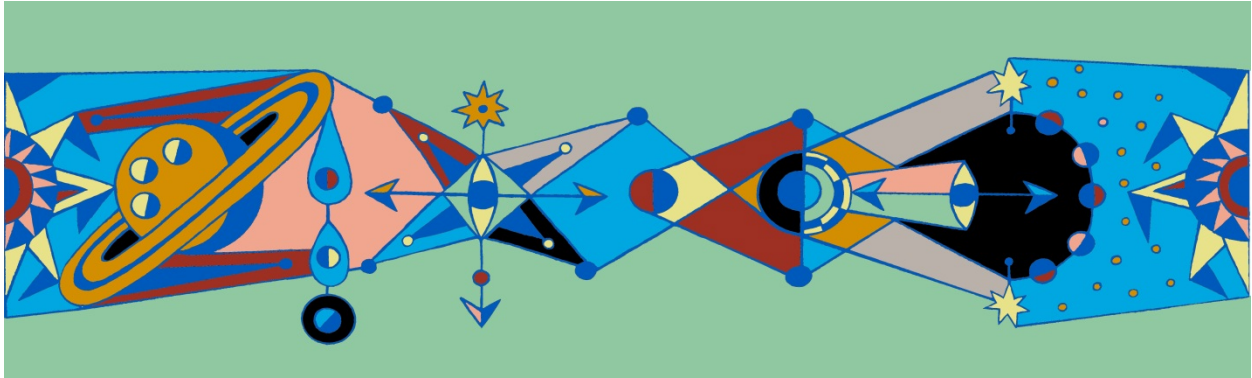
The proposed title “There Slipped Saturn A Perpetual Tock - a.k.a. The Saturn Clock” takes its cue from the eclectic mixture of the parlors of curiosities, exhibits of invention, fanciful gardens and recreation once experienced at Woodward's Gardens to forge a contemporary vision.

As the title of the mural suggests, the imagery evokes the workings of a fantastical celestial clock whose functions are initially triggered by Saturn. A perpetual movement of planetary units is released and rolls throughout an arcade course in the playful spirit of pinball or skateboarding. The planetary spheres eventually become embedded within natural forms, along with the hands of time. The mural work spans the length and height of the columns, as well as utilizes both the supportive structures and upper lintels as canvases for artwork. The mural embraces the entire scale of the Skatepark and seeks to bring a cohesive and playful environment to this new and inspired space. “The Saturn Clock” aspires to deliver a unique identity to the new park with imagery that is fun and open to skater, pedestrian and motorist.

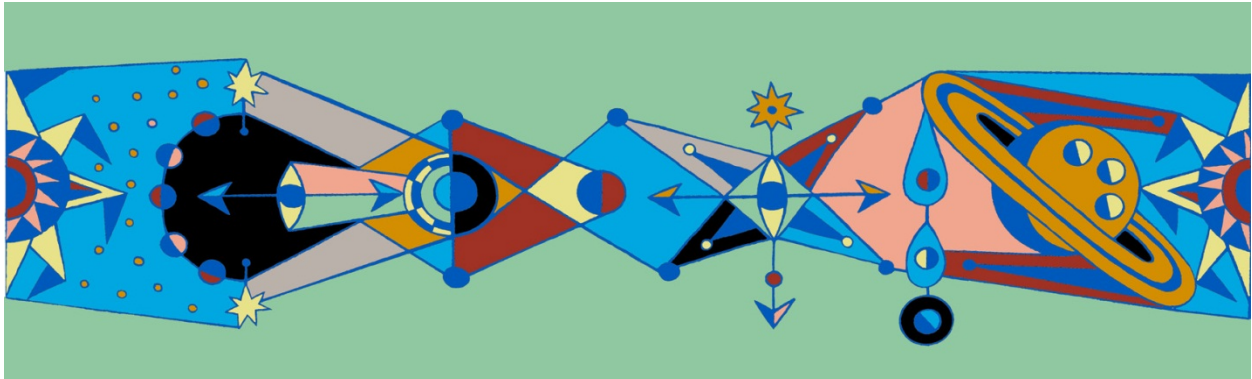
FINAL DESIGN FOR EACH ELEMENT



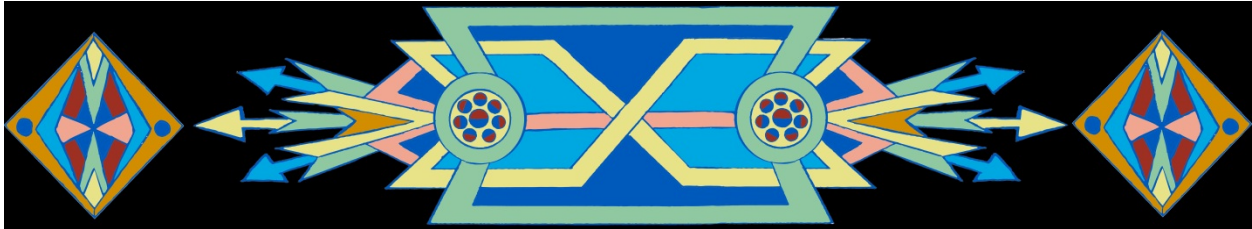
COLUMN DESIGN



UPPER AREA FOR COLUMN 1

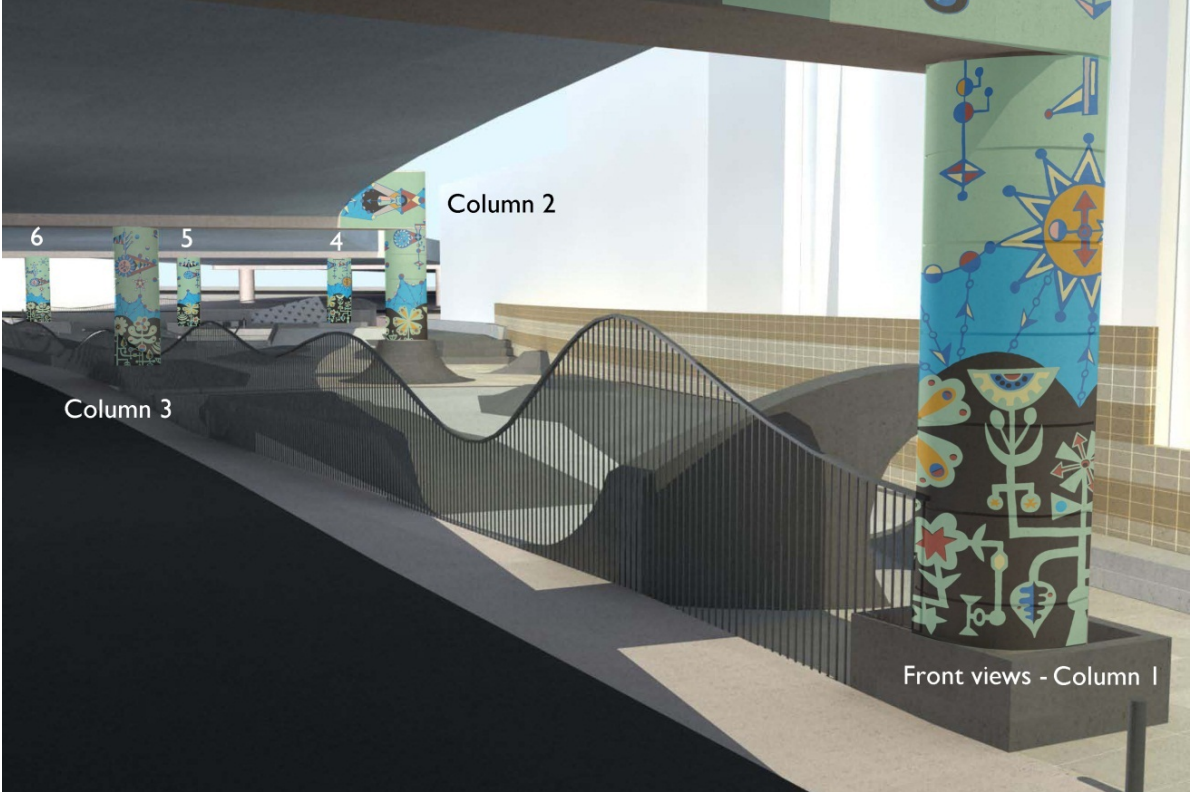


UPPER AREA FOR COLUMN 2



LINTEL DESIGN

Final Layout of Design Elements in Skatepark

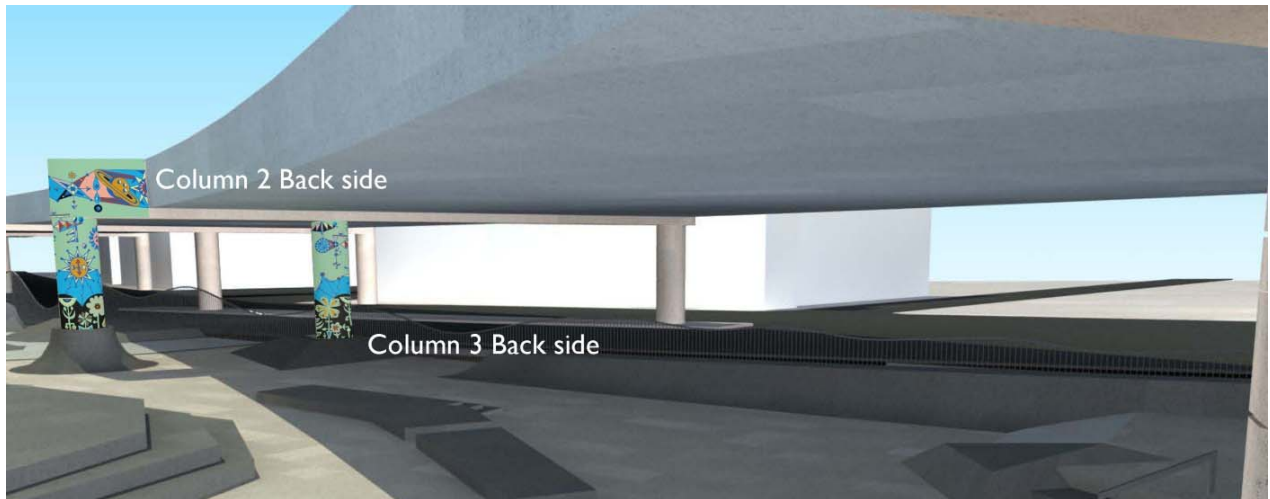


6
5
4
Column 2
Column 3

Front views - Column 1



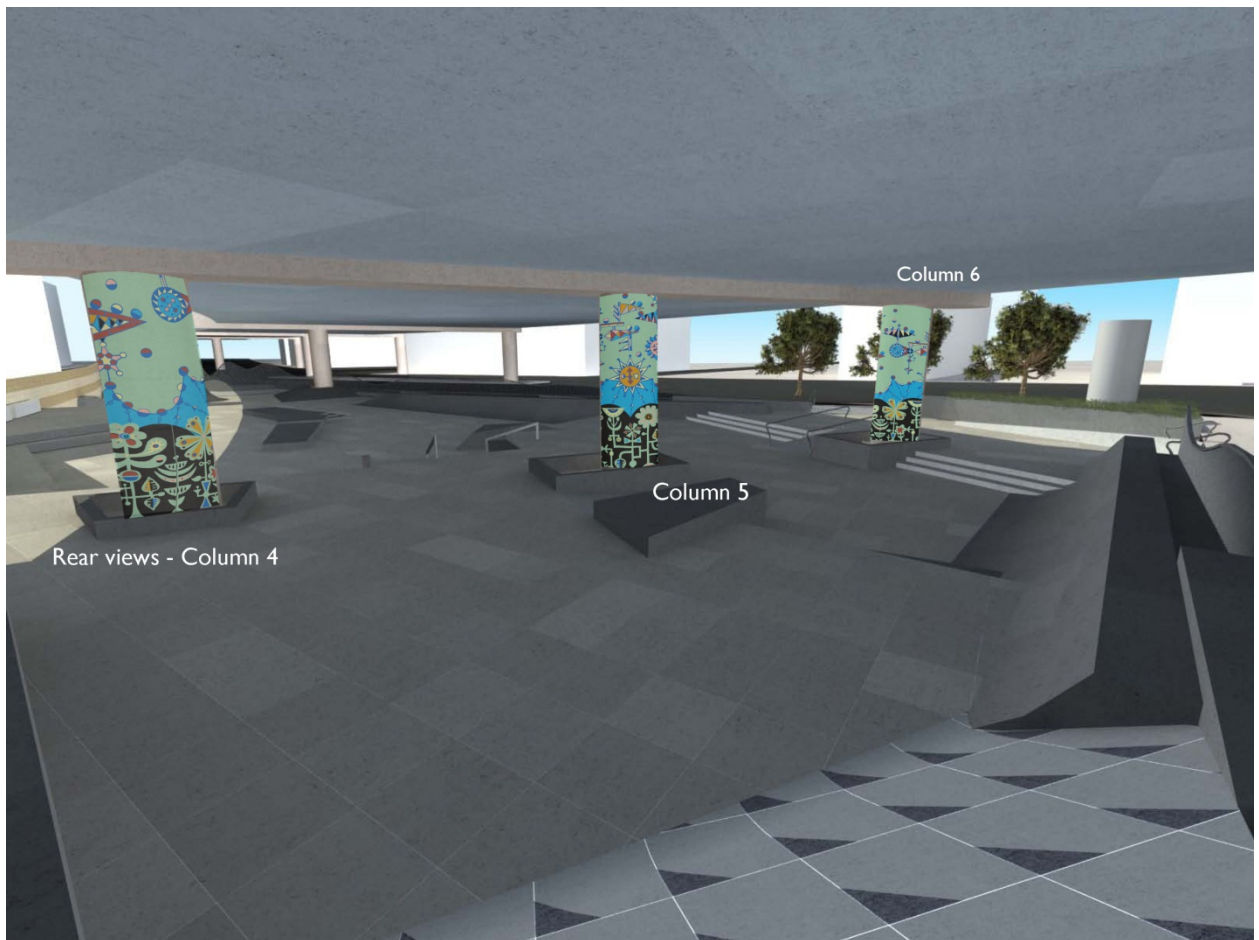
Front Side Column 1



*Please note that background color for lintel design and lower portion of column is black (transparency shown here is intended to show the conduit/lighting elements that will be painted over).



Front Left Side Views
Lintels & Columns 6, 5, 4



Rear views - Column 4

Column 5

Column 6